

Ready to Move

A Prestigious Project



*Start living your dreams
in the lap of nature
adjacent to Golkonda fort green zone*



P02400003455

Project Approved by Major Banks



CHILCON
MAYAN



your personal forest, in the vicinity of IT HUB @ **CHILCON MAYAN**

Chilcon Mayan living is enjoying the music of life with beautiful notes of nature, Peacock Crawling the aura of fresh air and chorus of comforts. Chilcon Mayan is Quiet and stress-free. Serenity and beauty of greenery brings soothing experience and relaxes mind & body to the people as age. Huge green space

Forget harrowing daily commutes that steal your time and your peace of mind. Forget having to choose between a home close to the office or a home you'd like to live in. Located in close proximity to IT Hub Gachibowli & Hitech City, Mayan Boasts smooth connectivity and access to excellent civic amenities.

Project Highlights

- Strategic Location & pollution free environment
- Neighbour to 800 acres conservation zone
- 50 Meters from Hyderabad Recreation Club
- Generator backup for lifts, lobby and living room
- Fine quality construction & materials of reputed brand
- Children play area & Jogging track
- Excellent ventilation from all sides
- Vastu compliant





Specifications

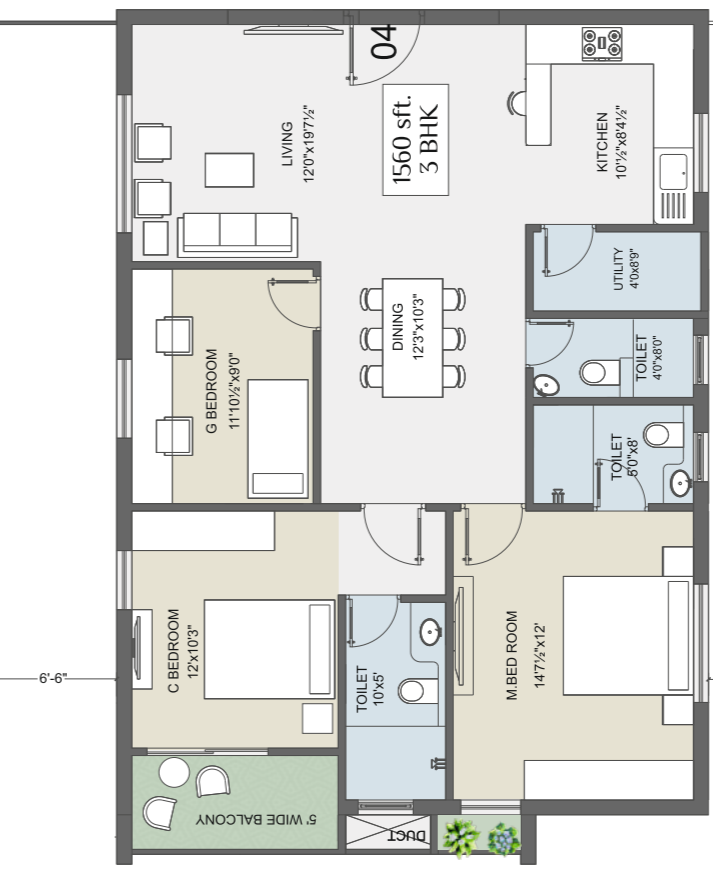
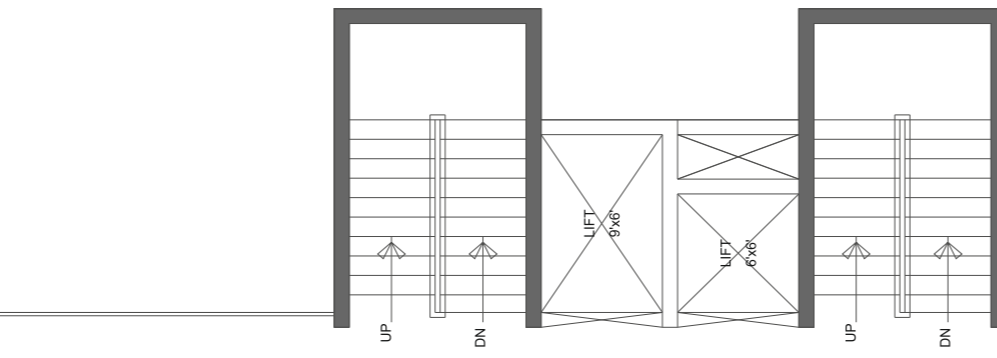
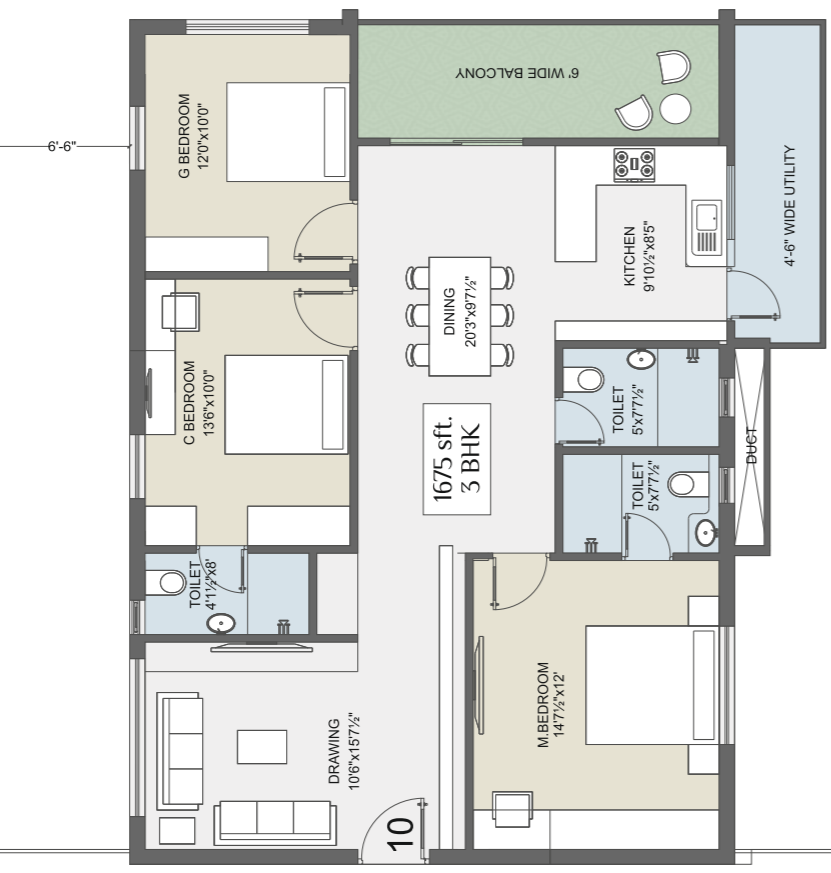
- Super Structure**
 - ✓ RCC fumed structure with earth quake resistant design
- Structure & Plastering**
 - ✓ Red bricks for the walls (Kareemnagar)
 - ✓ Two coats cement plastering for both internal and external walls
- Paints**
 - ✓ External: Combination of texture /smooth paint would cover the entire exterior façade along with exterior emulsion paint of Asian / Equivalent.
 - ✓ Internal: Smooth wall putty finish with acrylic emulsion paints of Asian / Equivalent.
- Doors**
 - ✓ Teak wood frame & shutter with polish for main Doors & Bedroom Doors.
 - ✓ PVC Doors for Bathrooms.
 - ✓ Balcony Doors: UPVC sliding shutters with toughened glass.
- Windows**
 - ✓ UPVC Windows with toughened glass.
- Kitchen (Optional)**
 - Granite platform with stainless steel sink.
- Flooring**
 - ✓ Granite / Marble for flooring in Lounge & Passage.
 - ✓ Double Charge Vitrified Tiles of VARMORA in Hall, Dining & bed rooms.
 - ✓ Anti-skid tile flooring in Toilets
 - ✓ Tiles dada in Toilets and Utilities

- Bathrooms and Toilet:**
 - ✓ Wash Basin with hot and cold wash basin mixer.
 - ✓ WC flush tank of Hindware or equivalent make
 - ✓ Hot and cold mixer with shower.
 - ✓ Provision for geysers in toilets
 - ✓ All fittings are chrome plated
 - ✓ Tiles up to 7' height ceramic non slippery flooring
- Electrical**
 - ✓ Distribution Boards & MCB's of LEGRAND or equivalent.
 - ✓ Concealed copper Fire retardant wiring in conduits for lights, fan, plug and power plug points of Finolex make or equivalent make.
 - ✓ Power outlets for air-conditioners in all bedrooms and Living.
 - ✓ Power outlets for geysers in all bathrooms.
 - ✓ Power plug for cooking range chimney, refrigerator, microwave ovens / mixer grinder in kitchen.
 - ✓ Adequate Plug points for TV & audio systems etc.
 - ✓ 3-phase supply for each unit and individual meter boards.
 - ✓ All electrical fittings of MK / Legrand or equivalent make.
- Lifts**
 - Lifts of Johnson make
- Generator**
 - ✓ Complete Power backup (Except Geaser & AC's)
- Utilities**
 - ✓ Provision for Exhaust fan, Chimney, water purifier & Washing machine
 - ✓ One internet provision in each flat.
 - ✓ Telephone point for each flat.





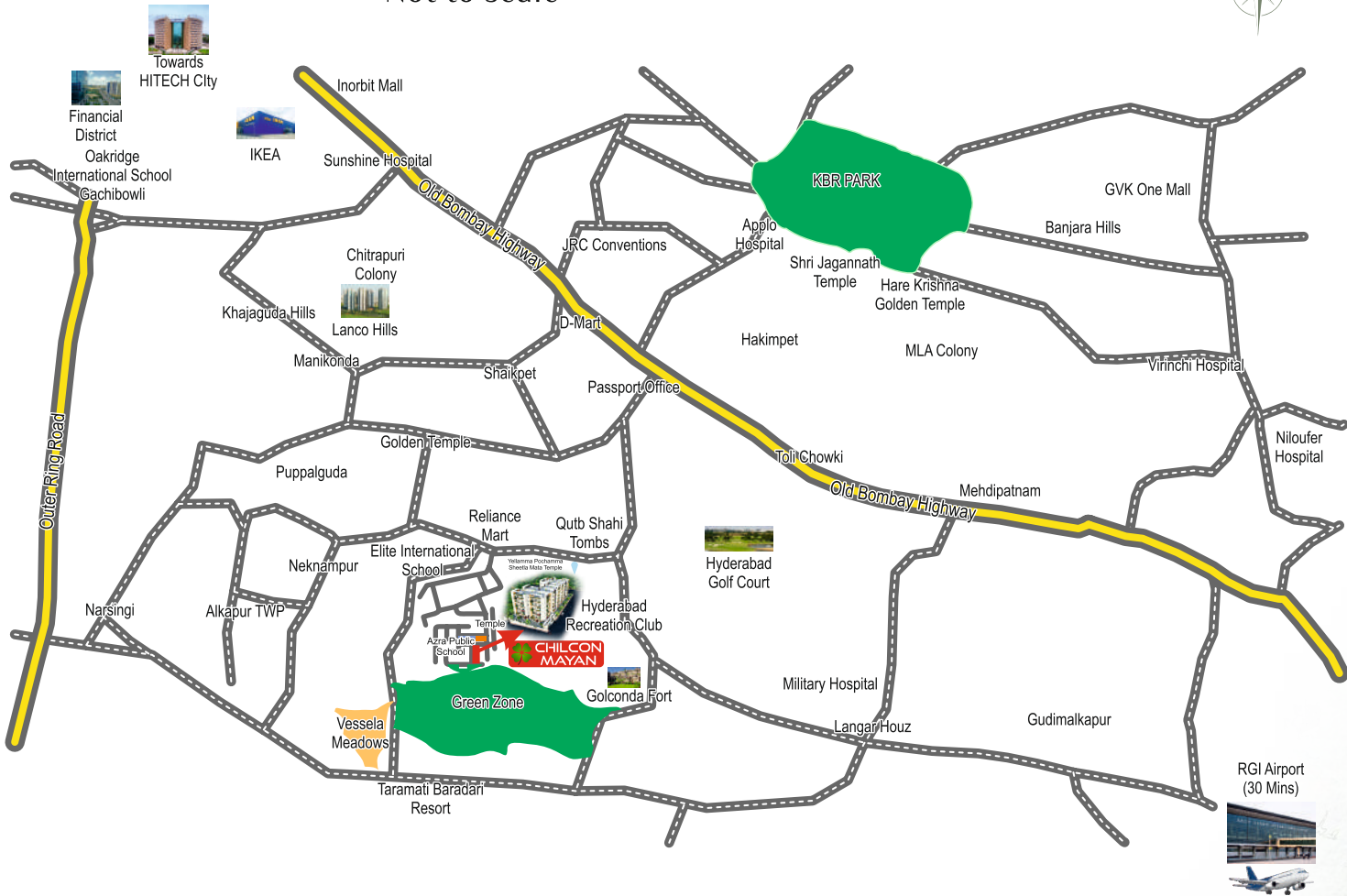
Typical Floor Plan





Location Map

Not to scale



< 3 kms

- Hyderabad Recreation Club 0.05 kms
- Elate International School 1 km
- Alkapur Township 1.5 kms
- Golkonda Fort 2 kms
- Golden Temple, Manikonda 2 kms
- Shivalayam 2.5 kms
- Hyderabad Golf Course 2.5 kms
- Vasavi Engineering College 2.5 kms

3 kms to 6 kms

- Passport Office Tolichowki 4 kms
- Lanco Hills 4 kms
- Sunshine Hospital 5 kms
- KBR Park 6 kms
- Delhi Public School 6 kms
- Oakridge International School 6 kms
- Mehendipatnam 6 kms

>6Kms

- Jubilee Hills Check Post 7 kms
- Biodiversity Park 7 kms
- Care Hospital 8 kms
- Raheja Mindspace 9 kms
- Financial District 9 kms
- AIG Hospitals 10 kms
- Inorbit Mall 10 kms
- Hitech City 10 kms



CHILCON

Corporate Office:
 CHIL CONSTRUCTION LLP.
 A-104, Jai Hind Valley,
 Manikonda, Hyderabad- 500089
 Ph: 040 3591 5404, +91 9866345897.
 email: chilconllp@gmail.com
 www.chilcon.in

Site Address:
 CHILCON MAYAN
 Pl. No.: 14, 15, 16 & 17,
 Opp. Azra Public School,
 Golkonda Hills, Nekkampur Village,
 Gandipet Mandal, Hyderabad - 500089.
 Ph: +91 9347558488, 9347516211.
 email: sales.chilcon@gmail.com



Location QR



Website QR

Architects & Planners:
 Sysplan Associates
 Hyderguda, Hyderabad.